

YARD DUTY AND SUPERVISION POLICY

PRIMARY SCHOOLS

PURPOSE

To ensure school staff understand their supervision and yard duty responsibilities.

SCOPE

The Principal is responsible for ensuring that there is a well-organised and responsive system of supervision in place during school hours, before and after school, and on school excursions and camps.

This policy applies to all teaching and non-teaching staff at Parkhill Primary School, including education support staff, casual relief teachers and visiting teachers.

School staff are responsible for following reasonable and lawful instructions from the principal, including instructions to provide supervision to students at specific dates, time and places.

POLICY

Before and after school

Parkhill Primary School's grounds are supervised by school staff from 8:45am until 3:45pm. Outside of these hours, school staff will not be available to supervise students.

Before and after school supervision will be at the front of the school only, the oval and classroom areas are not supervised.

Parents and carers should not allow their children to attend Parkhill Primary School outside of these hours. Families are encouraged to contact OSH Club on 1300 395 735 for more information about the before and after school care facilities available to our school community.

If a student arrives at school before supervision commences at the beginning of the day, the principal or nominee staff member will, if deemed necessary, follow up with the parent/carer to:

- advise of the supervision arrangements before school
- request that the parent/ carer make alternate arrangements.

If a student is not collected before supervision finishes at the end of the day, the principal or nominee staff member will consider whether it is appropriate to:

- attempt to contact the parents/carers
- attempt to contact the emergency contacts
- place the student in an out of school hours care program (if available)
- contact Victoria Police and/or the Department of Health and Human Services (Child Protection) to arrange for the supervision, care and protection of the student.

School staff who are rostered on for before or after school supervision must follow the processes outlined below.

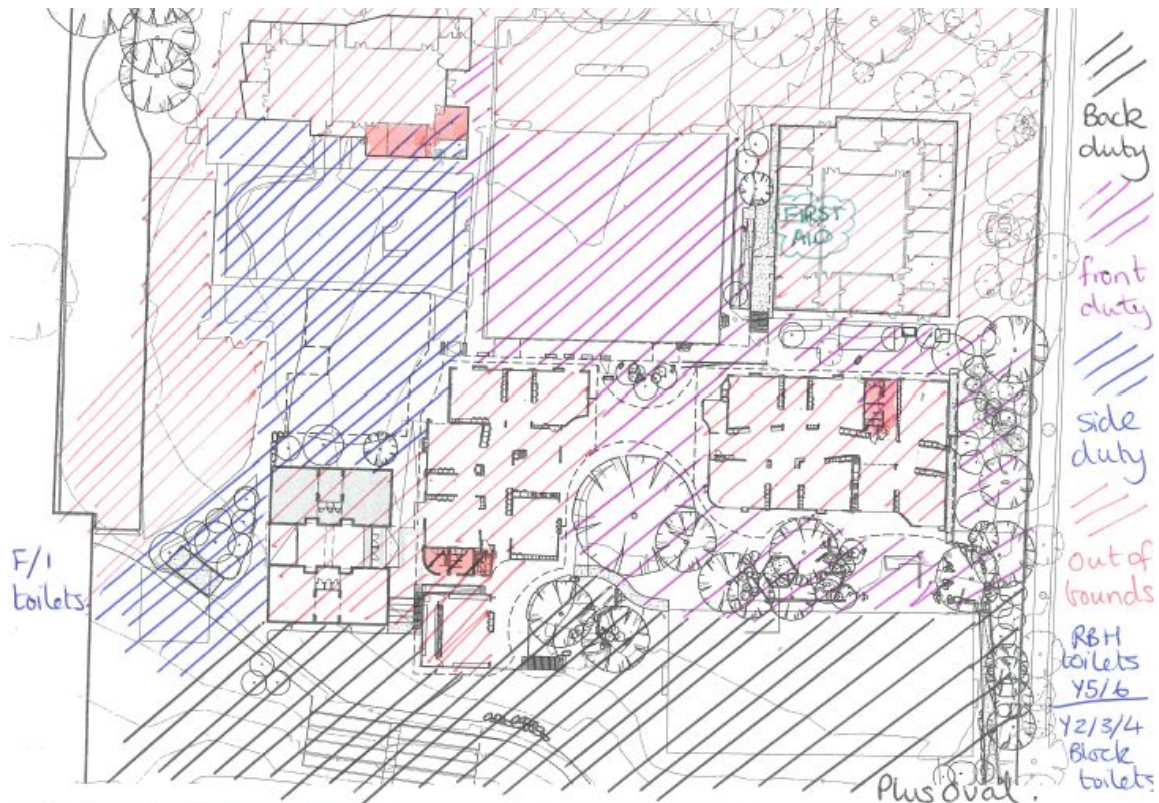
Yard duty

All staff at Parkhill Primary School are expected to assist with yard duty supervision and will be included in the weekly roster.

The Assistant Principal is responsible for preparing and communicating the yard duty roster on a regular basis. At Parkhill Primary School, school staff will be designated a specific yard duty area to supervise.

The designated yard duty areas for our school (as at Term 4 2018) are [outline areas and include map of zones where appropriate i.e:]

Zone	Area
Zone 1 - Front of school	LC1 Deck (eating area), asphalt, playground, Foundation playground
Zone 2 - Side	Science Kitchen deck (eating area), garden, orchard, top of oval
Zone 3 - Back of school	artroom deck (eating area), sandpit, soccer field, oval, 5/6 steps



School staff must wear a provided safety/hi-vis vest and small first aid bag while on yard duty. Both items are stored in the staffroom. Staff should have their mobile phone while on duty.

Staff who are rostered for yard duty must remain in the designated area until they are replaced by a relieving teacher.

During yard duty, supervising staff must:

- methodically move around the designated zone to ensure that all areas are within line of sight to at least one yard duty teacher at a time
- be alert and vigilant
- approach any unknown people and direct them to the office
- intervene immediately if potentially dangerous or inappropriate behaviour is observed in the yard
- enforce behavioural standards and implement appropriate consequences for breaches of safety rules, in accordance with any relevant disciplinary measures set out in the *Student Engagement and Wellbeing* policy
- ensure that students who require first aid assistance receive it as soon as practicable
- log any incidents or near misses as appropriate
- if being relieved of their yard duty shift by another staff member (for example, where the shift is 'split' into 2 consecutive time periods), ensure that a brief but adequate verbal 'handover' is given to the next staff member in relation to any issues which may have arisen during the first shift.

If the supervising staff member is unable to conduct yard duty at the designated time, they are responsible for swapping their duty with another staff member and marking this in the diary. If unable to, they should contact the Assistant Principal or Principal with as much notice as possible prior to the relevant yard duty shift to ensure that alternative arrangements are made.

If the supervising staff member needs to leave yard duty during the allocated time, they should contact the Assistant Principal or Principal but should not leave the designated area until the relieving staff member has arrived in the designated area.

If a relieving or next staff member does not arrive for yard duty, the staff member currently on duty should contact the office, Assistant Principal or Principal and not leave the designated area until a replacement staff member has arrived.

Should students require assistance during recess or lunchtime, they are encouraged to speak to the supervising yard duty staff member.

Classroom

The classroom teacher is responsible for the supervision of all students in their care during class.

If a teacher needs to leave the classroom unattended at any time during a lesson, they should first contact the office for assistance. The teacher should then wait until another staff member has arrived at the classroom to supervise the class prior to leaving.

School activities, camps and excursions

It is the Principal's and/or Assistant Principal's responsibility to ensure appropriate supervision will be planned for special school activities, camps and excursions on an individual basis, depending on the activities to be undertaken and the level of potential risk involved.

FURTHER INFORMATION AND RESOURCES

- School Policy and Advisory Guide:
 - [Supervision](#)
 - [Duty of Care](#)
 - [Child Safe Standards](#)
 - [Visitors in Schools](#)

REVIEW CYCLE

This policy was last updated on 10 December 2018 and is scheduled for review on December 2019. This policy will also be updated if significant changes are made to school grounds that require a revision of Parkhill Primary School's Yard Duty and Supervision Policy.